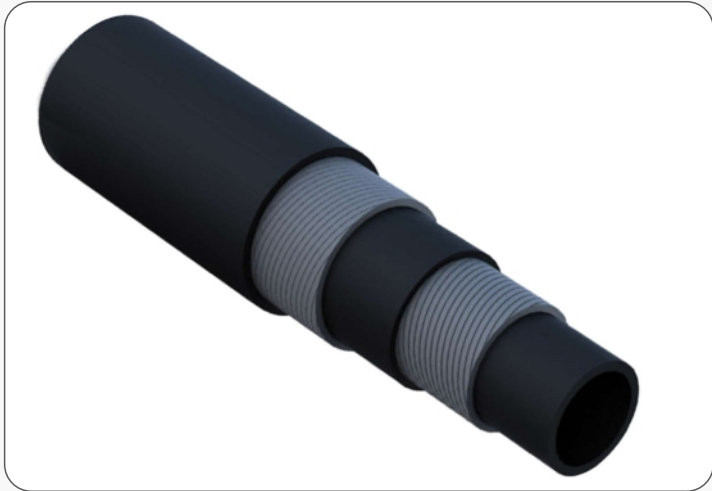


HOT WATER HOSE



Structure:

Inner Tube - Heat Resistant Synthetic Rubber

Reinforcement - Textile plies

Outer Cover - Abrasion and weather resistant Rubber. Fabric impression.

Applications:





Hot water for Industries

Temperature range:



-30°C to + 100°C

Standards

IS 5821/79

 int mm	 w.p.bar	 b.p.bar	 mtr
12.50	7	21	100
20.00	7	21	5
25.00	7	21	5
31.00	7	21	5
38.00	7	21	5
50.00	7	21	40
63.00	7	21	40
75.00	7	21	40

Pooja Shah - Sales
+91-99784 42215 | +91-70690 96458
Chirag Shah - Technical
+91-79903 36570
S.D. Shah - Director
+91-90990 16044

 flexaflexhoses@gmail.com
 www.flexaflexhoses.com
www.hosesmarket.com

FLEXAFLEX HOSES INTERNATIONAL
106, First Floor, Kailashpathi Chamber,
Nr. Sunrise Restaurant, Reid Road,
O/S Panchkuva Gate, Ahmedabad - 380 002